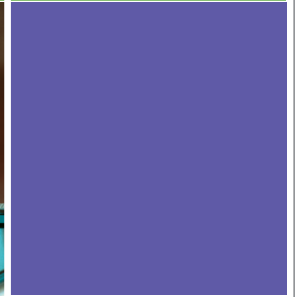




## Health Program

### *Health Project*



The Health Project is a state-focused initiative committed to developing practical, bipartisan solutions to transform the nation's health care system. Federal and state health care reforms and initiatives require the development and adoption of innovative and creative approaches to health system solutions.

In collaboration with federal, state, business, and workforce leaders, the project fosters cooperation, highlights progress, and brings Republicans and Democrats together to help states build the necessary infrastructure to address their health care challenges.

The Health Project is supported and guided by a diverse advisory council dedicated to addressing these challenges. Progress requires not only the cooperation of both sides of the political aisle, but the expertise and insight of key industry stakeholders.

Failure to achieve health system transformation will make it impossible for states to meet their current or future public health, workforce, delivery, and budgetary responsibilities. Solving our health system crisis—successfully addressing the issues of rising costs, eroding coverage, and inconsistent quality—requires a new level of cooperation between federal and state governments. The Health Project seeks to realize greater bipartisan support for lasting and viable health system reforms.





## Health Program

### Health Project

#### PROJECT LEADERSHIP

##### Co-Chairs



**Tom Daschle**  
Former Senate  
Majority Leader



**Bill Frist**  
Former Senate  
Majority Leader

##### Co-Directors



**Sheila Burke**

#### About Bipartisan Policy Center

Founded in 2007 by former Senate Majority Leaders Howard Baker, Tom Daschle, Bob Dole and George Mitchell, the Bipartisan Policy Center (BPC) is a non-profit organization that drives principled solutions through rigorous analysis, reasoned negotiation and respectful dialogue. With projects in multiple issue areas, BPC combines politically balanced policymaking with strong, proactive advocacy and outreach.

#### KEY INITIATIVES

##### Health Insurance Market Reforms

Over the next few years, state leaders will make critical decisions about the design and operation of their state health insurance exchanges. These leaders need unbiased, actionable information to assist them in the development of health insurance exchanges and ongoing balanced information to support insurance reforms at the state level. Through a series of public events and private meetings, BPC will gather state, federal, and industry leaders to share expertise and insights with the aim of resolving key issues and concerns.

##### Health Information Technology

Effective development and widespread dissemination of health IT will support many health and health care system improvements. The identification of successful strategies for leveraging health IT, as well as the need for coordination of these efforts, will help stakeholders make the most efficient use of their scarce resources. In consultation with industry experts and key policymakers, BPC is analyzing and highlighting the policies, strategies and best practices that drive effective use of health IT investments.

Issuing recommendations through a series of events and publications, BPC will help health care leaders—particularly those operating at the state level—leverage health IT in support of health system transformation goals, such as delivery system reforms, insurance market reforms and exchanges, and coordination of state efforts.

##### Health Professional Workforce

The health professional workforce is at the heart of the health care delivery system. Recognizing the need to address changing demands on health professionals, BPC will analyze the challenging issues around how best to structure, educate, retain, license, and regulate the health care workforce. To begin to address these issues, BPC is publishing a study of the supply and demand of the health professional workforce to determine what level of health care services is most needed and where the jobs are located.

In response to the transformative workforce landscape, BPC will identify creative and innovative health care workforce practices from the public and private sectors. Working with a diverse coalition of experts and professionals, including physicians, nurses, economists, educators, and policymakers, BPC will then produce a set of policy options and issue briefs that convey interdisciplinary needs and challenges. Communicating its findings at the federal, state, and local levels, BPC will recommend how our system can better achieve patient-centered, team-based, high quality care.

1225 Eye Street NW, Suite 1000  
Washington, DC 20005  
(202) 204-2400

[WWW.BIPARTISANPOLICY.ORG](http://WWW.BIPARTISANPOLICY.ORG)